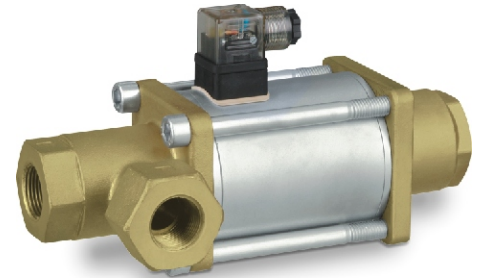


nominal specifications	CXD DR 3/2-way coaxial valve
3/2-way valve	direct acting / solenoid
pressure range	0-600 psi
connection	FNPT threads
function	NC - normally closed, flow A ⇒ C NO - normally open, flow A ⇒ B
design	pressure balanced, with spring return
body materials parts in contact with media	brass
seal materials seat / dynamic / static	FPM / PTFE / FPM customer to verify seal / seat compatibility with media
media	gaseous-liquid-gelatinous-highly viscous-contaminated
electrical connection	PG 9, plug acc. DIN EN 175301-803 form A, LED



technical data	CXD 10 DR	CXD 15 DR	CXD 20 DR	CXD 25 DR
orifice mm	DN 10	DN 15	DN 20	DN 25
port connection threads	FNPT 3/8	FNPT 1/2	FNPT 3/4	FNPT 1
CV A ⇒ B / A ⇒ C	2.5 / 1.8	6.0 / 4.1	8.6 / 6.4	14.0 / 11.7
media temperature	-4 °F to +212 °F	-4 °F to +212 °F	-4 °F to +212 °F	-4 °F to +212 °F
ambient temperature	-4 °F to +140 °F	-4 °F to +140 °F	-4 °F to +140 °F	-4 °F to +140 °F
operating time opening / closing	45 ms / 70 ms	60 ms / 130 ms	105 ms / 150 ms	150 ms / 190 ms
vacuum leak rate	< 10 <sup>-4</sup> mbar-l-s <sup>-1</sup>	< 10 <sup>-4</sup> mbar-l-s <sup>-1</sup>	< 10 <sup>-4</sup> mbar-l-s <sup>-1</sup>	< 10 <sup>-4</sup> mbar-l-s <sup>-1</sup>
flow direction	A ⇒ B / A ⇒ C B ⇒ A ( P 180 psi max.)	A ⇒ B / A ⇒ C B ⇒ A ( P 180 psi max.)	A ⇒ B / A ⇒ C B ⇒ A ( P 180 psi max.)	A ⇒ B / A ⇒ C B ⇒ A ( P 180 psi max.)
nominal voltage	DC 24 V / AC 110 V	DC 24 V / AC 110 V	DC 24 V / AC 110 V	DC 24 V / AC 110 V
current consumption	DC 1.45 A / AC 0.36 A	DC 2.1 A / AC 0.41 A	DC 2.2 A / AC 0.56 A	DC 2.5 A / AC 0.62 A
insulation class	H	H	H	H
enclosure protection	IP 65	IP 65	IP 65	IP 65
energized duty rating	ED 100%	ED 100%	ED 100%	ED 100%
length L1 / L2	6.54 in / 1.97 in	7.87 in / 2.76 in	9.02 in / 3.15 in	9.80 in / 3.54 in
length L3 / L4	1.46 in / 1.26 in	2.36 in / 1.52 in	2.83 in / 1.79 in	3.15 in / 1.89 in
weight	4.41 lb	9.04 lb	13.23 lb	17.86 lb

accessories optional	order-codes			
mounting brackets stainless steel	1 2 3 5 5 5	1 2 3 5 5 6	1 2 3 5 5 7	1 2 3 5 5 8
limit switch Reed AC / DC 10-30 V	- / -	- / -	- / -	- / -

drawings	circuit symbols	valve order-code
	<p>function: <b>NC</b> valve normally closed</p> <p>function: <b>NO</b> valve normally open</p>	<p>9   1   1</p> <p>NC=3 NO=4</p> <p>DN10=5 DN15=6 DN20=7 DN25=8</p> <p>AC110V=1 DC24V =4</p>