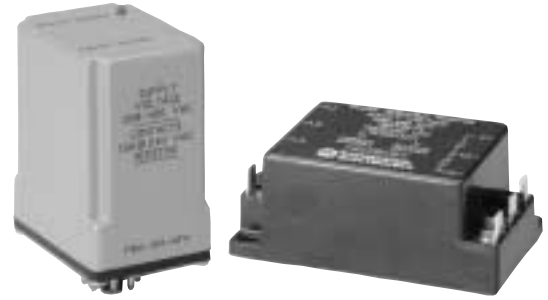


PHASE SEQUENCE MONITOR

PRA Series

The PRA-100 Series are designed to allow the output to energize only when the phase connections are in the proper sequence. For use in applications where motor direction is critical or the installation is required by code to have sequence detection.



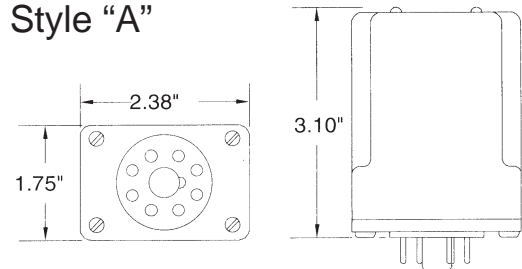
Specifications

Operating Voltage:	208-480 VAC $\pm 15\%$, phase-to-phase, 50/60 Hz
Phase Sequence:	ABC (Will Not Operate CBA)
Response Time:	200 mSec. (approximately)
Reset:	Automatic
Output Rating	
Style A & N:	SPDT, 10 Amps @ 240 VAC Resistive, 1/2 hp @ 240 VAC
Style E:	DPDT, 10 Amps @ 240 VAC Resistive, 1/2 hp @ 240 VAC
Temperatures	
Operate:	0°C to +55°C
Storage:	-45°C to +85°C
Total Apparent Power:	11 VA @ 480 VAC
Indicators	
Green LED:	Glow on correct sequence
Red LED:	Glow on incorrect sequence
Enclosures	
Style "A":	Model No. PRA-100-AFA, LEXAN® dust cover 8 pin plug-in
Style "N":	Model No. PRA-100-AFN, Glass filled VALOX® surface mounted 6-1/4" male quick connect
Style "E":	LEXAN® Surface Mount Model No. PRA-100-AFE, #8-32 screws

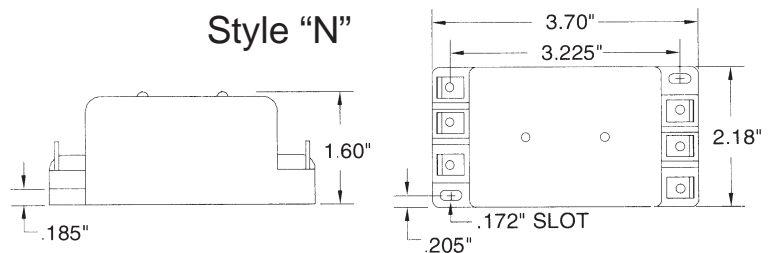
Operation: When the phase sequence is correct and the operating voltage is present on all phases, the relay will energize and the green LED indicator will glow. If the phases are in reverse rotation, the relay will not energize and the red LED indicator will glow. The PRA-100 Series will not detect phase loss while the motor is turning.

Dimensions

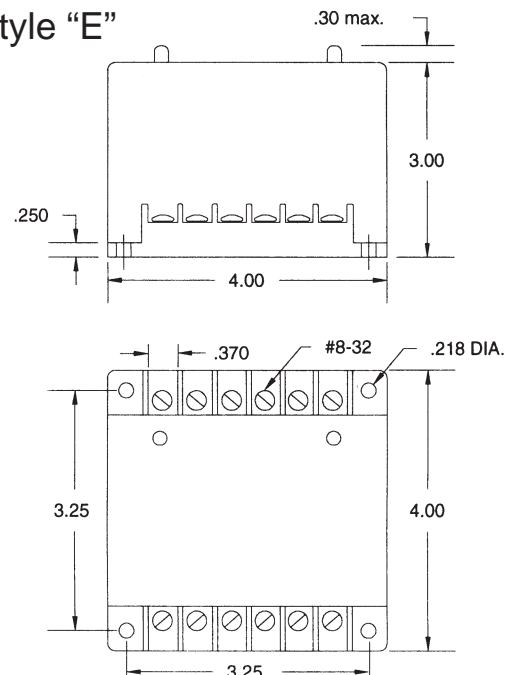
Style "A"



Style "N"



Style "E"



Wiring Diagram

