

Phase Loss, Under Voltage and Phase Sequence Monitor/Relays

SLA Series (Plug-In Style Enclosure)

Specifications

Operating Voltage: See Table Below
Phase Sequence: ABC (Will Not Operate CBA)
Power Required: 3 VA (Approximately)
Indicator LED: Glows When All Conditions Are Normal (On Applicable Models)

Response Times

Models Up to 300 VAC

Operate: 250 Milliseconds
Release: 0.5 Seconds

Models Over 300 VAC

Operate: 1 Second
Release: 2.0 Seconds

Reset:

Automatic

Agency Approval

UL Approved:

File #E55826; Reference Classification UL-508

CSA Certified:

File #LR40123; Reference Specification C22.2 No. 0 and C22.2 No. 14

U.S. Patent Number:

3,611,050

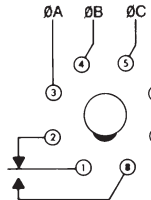


Figure 1

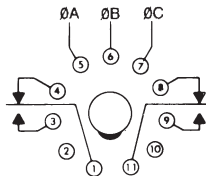


Figure 2

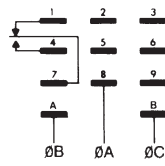


Figure 3



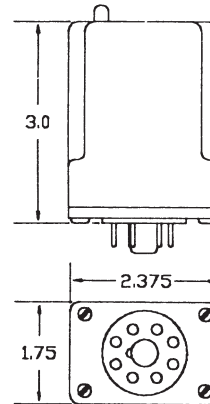
UL Listed



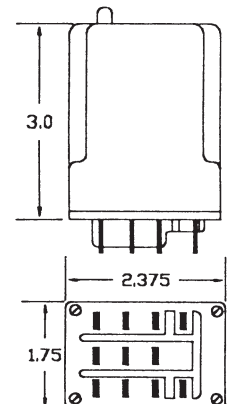
CSA Certified



Style A



Style A



Style B

MODEL NUMBER	OPERATING VOLTAGE	TYPE OF ADJUSTMENT	DROP-OUT VOLTAGE		AGENCY APPROVAL	STOCK	OUTPUT RATING
			1 Ø LOW	3 Ø LOW			
SLA-120-ALA	95-130 Adj	Lock Shaft	79-108	85-117	---	X	DPDT, 345 VA Inductive; 10 Amps Resistive @ 240 VAC, Figure 2
SLA-120-ASA		Screwdriver			• & CSA		SPDT, 345 VA Inductive; 10 Amps Resistive @ 240 VAC, Figure 1
SLA-120-ASB					•		SPDT, 345 VA Inductive; 10 Amps Resistive @ 240 VAC, Figure 3
SLA-230-ALA	190-270 Adj.	Lock Shaft	158-224	171-243	•	X	DPDT, 345 VA Inductive; 10 Amps Resistive @ 240 VAC, Figure 2
SLA-230-ASA		Screwdriver			• & CSA	X	SPDT, 345 VA Inductive; 10 Amps Resistive @ 240 VAC, Figure 1
SLA-230-ASB					•	SPDT, 345 VA Inductive; 10 Amps Resistive @ 240 VAC, Figure 3	
SLA-380-ASA	350-440 Adj.	Screwdriver	290-365	315-396	• & CSA	X	SPDT, 360 VA Inductive; 10 Amps Resistive @ 240 VAC, Figure 1
SLA-440-ASA	430-480 Adj.		357-398	387-432			
SUA-120-ALA	95-130 Adj.	Lock Shaft	79-108	85-117	• & CSA	X	SPDT, 345 VA Inductive; 10 Amps Resistive @ 240 VAC, Figure 1
SUA-120-ALAU*					▲ & CSA		
SUA-230-ALA	190-270 Adj.	Lock Shaft	158-224	171-243	• & CSA		
SUA-230-ALAU*					▲ & CSA		
SUA-380-ASA	350-440 Adj.	Screwdriver	290-365	315-396	• & CSA	X	SPDT, 360 VA Inductive; 10 Amps Resistive @ 240 VAC, Figure 1
SUA-440-ASA	430-480 Adj.		357-398	387-432			

*UL Listed only when used with RB-08 relay socket; 5 Amps Resistive @ 240 VAC. All voltages referenced on this page are phase-to-phase. Models also available with fixed operating voltages. Consult factory.

• UL Recognized
 ▲ UL Listed