

| HXL SERIES, SPIRAL L-SHAPED FLUOROPOLYMER (PTFE) HEATERS | | | | | | |
|---|-------|----------|------------|-----------|----------------|-----------|
| WATTS | VOLTS | HOT | STD. VERT. | MAX. | MODEL | SHIP |
| | | ZONE | LENGTH* | COLD ZONE | | |
| | | In./(mm) | In./(mm) | In./(mm) | | Lbs./(kg) |
| 500 | 120 | 6 | 12 | 41 | HXL 5106-R*-** | 6 |
| | 240 | (155) | (305) | (1040) | HXL 5206-R*-** | (2.5) |
| 1000 | 120 | 8 | 12 | 41 | HXL1108-R*-** | 7 |
| | 240 | (205) | (305) | (1040) | HXL1208-R*-** | (3.5) |
| 2000 | 120 | 12 | 18 | 40 | HXL2112-R*-** | 8 |
| | 240 | (305) | (460) | (1015) | HXL2212-R*-** | (4) |
| | 480 | | | | HXL2412-R*-** | |
| 3000 | 240 | 17 | 18 | 40 | HXL3217-R*-** | 13 |
| | 480 | (430) | (460) | (1015) | HXL3417-R*-** | (6) |
| 4000 | 240 | 20 | 18 | 40 | HXL4220-R*-** | 15 |
| | 480 | (510) | (460) | (1015) | HXL4420-R*-** | (7) |
| 5000 | 240 | 24 | 18 | 36 | HXL5224-R*-** | 18 |
| | 480 | (610) | (460) | (915) | HXL5424-R*-** | (8) |
| 6000 | 240 | 29 | 18 | 30 | HXL6229-R*-** | 21 |
| | 480 | (735) | (460) | (760) | HXL6429-R*-** | (10) |
| 8000 | 240 | 37 | 18 | 32 | 2HXL8237-R*-** | 26 |
| | 480 | (940) | (460) | (810) | 2HXL8437-R*-** | (12) |
| 9000 | 240 | 44 | 18 | 35 | 2HXL9244-R*-** | 29 |
| | 480 | (1120) | (460) | (890) | 2HXL9444-R*-** | (13) |

Single phase only. This configuration is not recommended for electroless chemistry or applications prone to sludge development.

Product Features and Benefits:

- ◆ **SUPERIOR CHEMICAL RESISTANCE:** Inert to most aqueous acid, alkaline, anodizing and pickling solutions up to 212°F (100°C).
- ◆ **RUGGED CONSTRUCTION:** Heavy wall fluoropolymer (PTFE) covered stainless steel element reduces permeation and eliminates the need for gas purge systems. Guaranteed 100% pinhole free.
- ◆ **OUTSTANDING PERFORMANCE:** Low watt density design (10 watts/square inch, 1.5w/cm²) for long service life.
- ◆ **EVEN HEATING:** Bottom design for even heating and varying liquid levels.
- ◆ **CORROSION RESISTANT HEAD:** Vapor tight, flame retardant polypropylene terminal enclosure with 3-foot (.9m) flexible PVC liquid tight conduit.
- ◆ **SAFETY FEATURES:**
 - Grounded internal metal element.
 - Thermal protector built in. Replaceable PTL-I fuse standard for solutions up to 190°F (88°C).
 - Non-floating construction.
- ◆ **CERTIFICATIONS:** UL (1-6 kW), CSA, and CE.
- ◆ **SIZES:** 500 watts to 9,000 watts.
- ◆ **VOLTAGES:** 120, 240 or 480 volts. 208, 380, 415, 600 and other voltages available. Single phase only.
- ◆ **OPTIONS AVAILABLE** (consult factory):
 - Replaceable thermal protectors:
 - PTL-IM: for solutions from 190°F (88°C) to 220°F (104°C).
 - Resettable thermal protectors:
 - PTL-II: bi-metal switch for solutions up to 190°F (88°C).
 - PTL-III: type-J thermocouple for solutions from 190°F (88°C) to 210°F (99°C).
 - PIII: type-J thermocouple for solutions from 210°F (99°C) to 250°F (121°C).
 - Longer vertical lengths (cold zones).
 - Polypropylene guards: recommended for applications up to 180°F (82°C).
 - Fluoropolymer (PTFE) guards: recommended for chromic acid or solutions over 180°F (82°C).
 - Special configurations.
 - Longer wire and conduit lengths.
 - Flexible continuous fluoropolymer leads (PIII protector only).
 - Lower watt densities for highly viscous solutions and technical acids.
 - Temperature and level controls sized to match the heater.

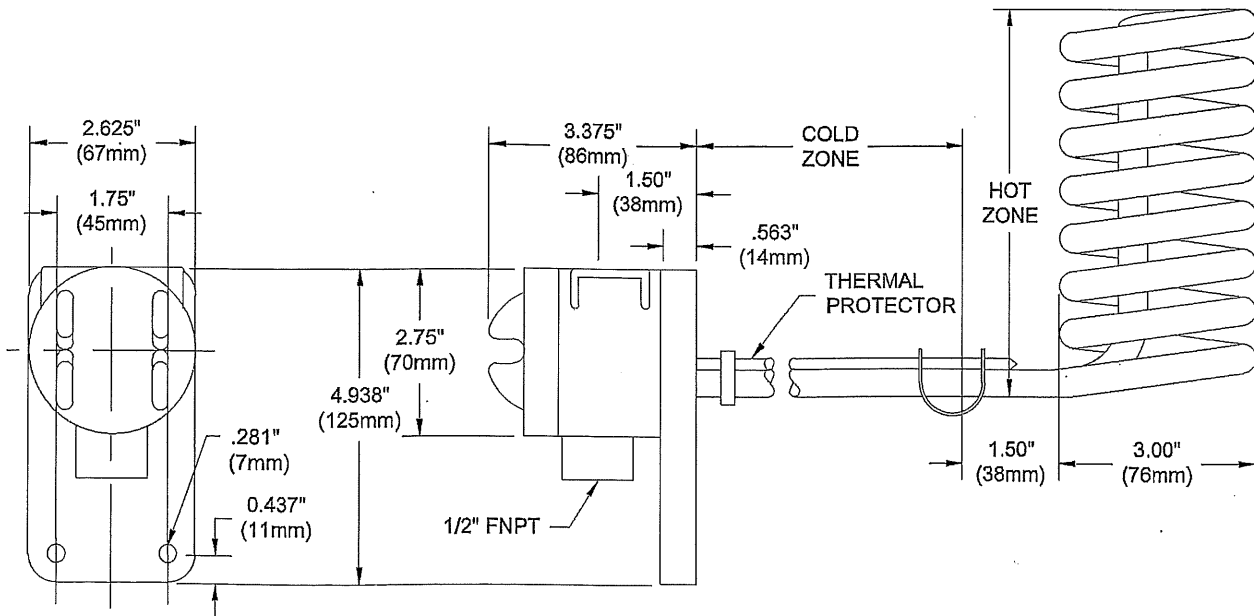
ANDERSON-BOLDS

24050 COMMERCE PARK • CLEVELAND, OHIO 44122
CLEVELAND • COLUMBUS • CINCINNATI

(216) 360-9800 (614) 885-3933 (513) 528-5680

www.anderson-bolds.com

DIMENSIONS (up to 6 kW)



SPIRAL L-SHAPED FLUOROPOLYMER (PTFE) HEATER

| Series | Wattage | Voltage | Horizontal Length | Options | Vertical Length | Guard Option | Type of Fuse | Wire and Conduit Length | | | | | | | | | | | | | | | | |
|--|--|---|--|---------|---|--------------|---|---|--|--------------|---------------------------|---------|----------------------------|-----------------|--|--|--|---------|---------------------------|----------|----------------------------|-------|----------------------------|--|
| | .5 = 500 1 = 1000 2 = 2000 3 = 3000 4 = 4000 5 = 5000 6 = 6000 8 = 8000 9 = 9000 | 1 = 120 2 = 240 4 = 480 -208 = 208 -277 = 277 -380 = 380 -415 = 415 -600 = 600 | 06 = .5kW 08 = 1kW 12 = 2kW 17 = 3kW 20 = 4kW 24 = 5kW 29 = 6kW 37 = 8kW 44 = 9kW specify custom lengths, not to exceed tank length | | -R12 = .5kW -R12 = 1kW -R18 = 2W -R18 = 3kW -R18 = 4kW -R18 = 5kW -R18 = 6kW -R18 = 8kW -R18 = 9kW specify custom lengths, not to exceed tank length | | no designator = 36" length standard specify variations from standard Ex: -X84 = 84" | | | | | | | | | | | | | | | | | |
| | HXL = PTFE sheathed 2HXL = 2 element PTFE sheathed HSL = 304 stainless steel 2HSL = 2 element 304 stainless steel | | | | | | <table border="1" style="width: 100%; border-collapse: collapse;"> <tr> <th colspan="2" style="text-align: center;">Replaceable Fuse</th> </tr> <tr> <td style="width: 50%;">-PTL-I (std)</td> <td>for solutions up to 190°F</td> </tr> <tr> <td>-PTL-IM</td> <td>for 190° - 220°F solutions</td> </tr> <tr> <th colspan="2" style="text-align: center;">Resettable Fuse</th> </tr> <tr> <td colspan="2" style="text-align: center;">(additional control components required)</td> </tr> <tr> <td>-PTL-II</td> <td>for solutions up to 190°F</td> </tr> <tr> <td>-PTL-III</td> <td>for 190° - 210°F solutions</td> </tr> <tr> <td>-PIII</td> <td>for 210° - 250°F solutions</td> </tr> </table> | Replaceable Fuse | | -PTL-I (std) | for solutions up to 190°F | -PTL-IM | for 190° - 220°F solutions | Resettable Fuse | | (additional control components required) | | -PTL-II | for solutions up to 190°F | -PTL-III | for 190° - 210°F solutions | -PIII | for 210° - 250°F solutions | |
| Replaceable Fuse | | | | | | | | | | | | | | | | | | | | | | | | |
| -PTL-I (std) | for solutions up to 190°F | | | | | | | | | | | | | | | | | | | | | | | |
| -PTL-IM | for 190° - 220°F solutions | | | | | | | | | | | | | | | | | | | | | | | |
| Resettable Fuse | | | | | | | | | | | | | | | | | | | | | | | | |
| (additional control components required) | | | | | | | | | | | | | | | | | | | | | | | | |
| -PTL-II | for solutions up to 190°F | | | | | | | | | | | | | | | | | | | | | | | |
| -PTL-III | for 190° - 210°F solutions | | | | | | | | | | | | | | | | | | | | | | | |
| -PIII | for 210° - 250°F solutions | | | | | | | | | | | | | | | | | | | | | | | |
| | | | | | | | | C = complete with guard | | | | | | | | | | | | | | | | |
| | | | | | | | | X = any special configuration not called out in the part number (specify in clear text) | | | | | | | | | | | | | | | | |

ORDERING EXAMPLE:

HXL5424-R18-PTL-I-X50

Spiral L-Shaped fluoropolymer heater, 5000 watts, 480 volt, single phase, 24" hot zone, 18" vertical length, PTL-I thermal fuse, 50" wire and conduit

ANDERSON-BOLDS

24050 COMMERCE PARK • CLEVELAND, OHIO 44122
 CLEVELAND • COLUMBUS • CINCINNATI
 (216) 360-9800 (614) 885-3933 (513) 528-5680
www.anderson-bolds.com